



DRESS CODE

- The dress code at Highland Tech High (HTH) will follow and support the Anchorage School District (ASD) dress code policy. The ASD dress code is outlined in the student handbook and covers disruptive, distracting, and unsafe clothing.
- HTH supports the following:
 - no head gear (hats, visors, beanies)
 - no hoodies
 - no baggy pants
 - no torn clothing
 - logos two inches or less
 - natural colored hair
 - non-distracting body piercing
- HTH dress code is a reflective policy developed and refined by stakeholders. We will continue to gather stakeholder input to improve the conditions that help with student achievement, including dress code.

2005/2006

Acceptable

Not Baggy VS. Baggy.

Unacceptable



These pants are acceptable because they fit properly at the waist, groin, and hem. It is also held up with a belt.



These pants are unacceptable because they are too baggy. They hang too far down from the groin and waist, and they drag on the floor.

Acceptable

Appropriate. Color VS. Faded

Unacceptable



These pants are acceptable because they are dark and not faded color.

These pants are unacceptable because they are faded. They are a different color in the front than they are on the sides. They are two different colors.



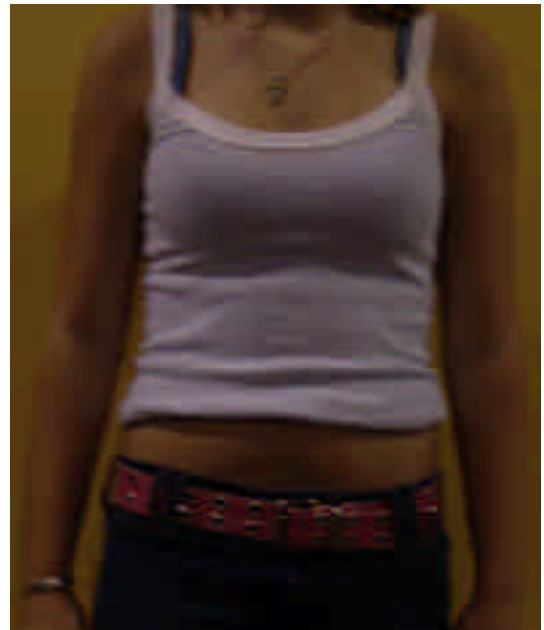
Acceptable

No Midriff VS Midriff

Unacceptable

This sweater is acceptable because there is no midriff or shoulders showing. Looks professional.

This is not acceptable because there is midriff and shoulders showing. It does not look professional.



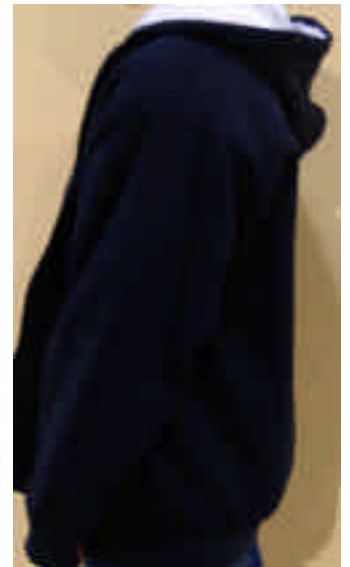
Acceptable

No Hoodie Vs. Hoodie

Unacceptable

This shirt is acceptable because does not have a hood, and it is not a hoodie.

This is unacceptable because it is a hoodie. Hoodies both zipped and unzipped are unacceptable.



Acceptable

No Logo

This shirt is acceptable because it does not have a logo larger than two inches in diameter. The logo is only about an inch.



VS. Logo.

Unacceptable

This shirt is not acceptable because it has a logo on it larger than 2 inches in diameter on the right or left side. It does not look business.



Acceptable

Short VS.

This shirt is acceptable because it is not too long. It fits properly at waste, or just below. Looks nice to the public.



Long

Unacceptable

This shirt is not appropriate because it is way too long. It hangs down almost to the knees. Shirts may be 2-3 inches below the waist.



Acceptable

Tucked VS. Un-tucked.

Unacceptable

This is acceptable because a shirt that does not have a straight hem (with the exception of white, undershirts), needs to be tucked in.

This is unacceptable because this white shirt is an undershirt, and needs to be tucked in.



Acceptable

Short VS. Longer

Unacceptable

This skirt is acceptable because it is of appropriate length. It is not two inches above the knee or less.

This skirt is unacceptable because it is too short. It is higher than two inches above the knees.



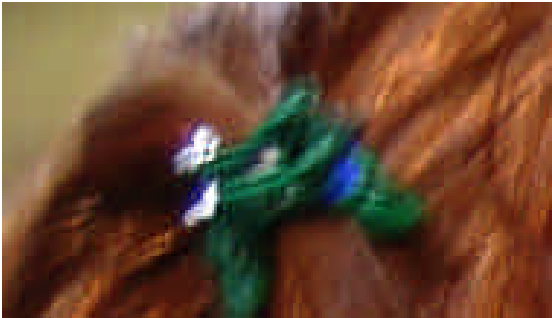
Acceptable

Appropriate. Accessories VS. Inappropriate

Unacceptable

These are acceptable (hair, etc) because they are not distracting to others, and they look nice.

These are unacceptable because they are distracting. Cell phones are not allowed, and neither are belt chains, wrist bands, or gloves.



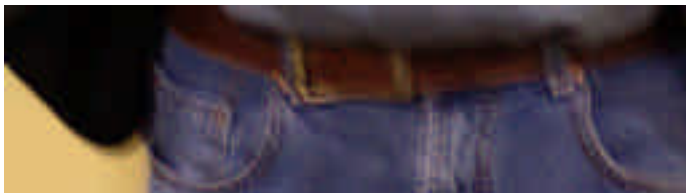
Acceptable

Appropriate Belts.VS. Inappropriate Belts

Unacceptable

Belts that fit properly around waste look nice and are appropriate for the work environment. It is not hanging off everywhere.

Belts with holes in them are not appropriate because they would look tacky if you were to show up with one on at your office, or job interview.



Pants VS. Capri

Acceptable

This is acceptable because they are full length. In addition there is a belt at the waist.



Unacceptable

This is unacceptable because they are not full length. Capri's are not allowed.



Casual VS. Sweats

Acceptable

This outfit is appropriate because it's not sweats. Shirt is tucked in, pants fit properly.



Unacceptable

This outfit is not appropriate because it is a workout outfit. Inappropriate for business casual. Shirt is not tucked in.



Acceptable

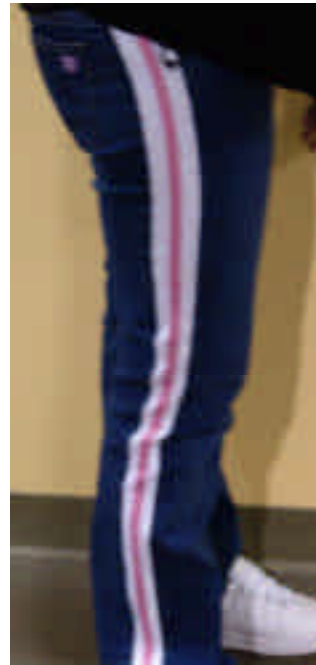
Acceptable Jeans VS. Unacceptable Jeans

Unacceptable

These jeans are acceptable because they are all one solid color, they look professional.



These pants are unacceptable because they have a white/ pink stripe down both sides of the legs. It looks unprofessional.



Acceptable

Cargo pants are acceptable because they look nice, and they aren't distracting to other people. No logos, patches, or more than 2 pockets on them.



Logo VS. No Logo.

Unacceptable

Pants with logo's are not appropriate because they look unprofessional.



Acceptable

Appropriate Shoes VS. Inappropriate Shoes

Unacceptable

This is acceptable because it is tightly tied, and not lose. It is clean and looks nice.



This is not acceptable because it is messy, unclean, and has silver tape on the tip. The shoe is loosely tied.



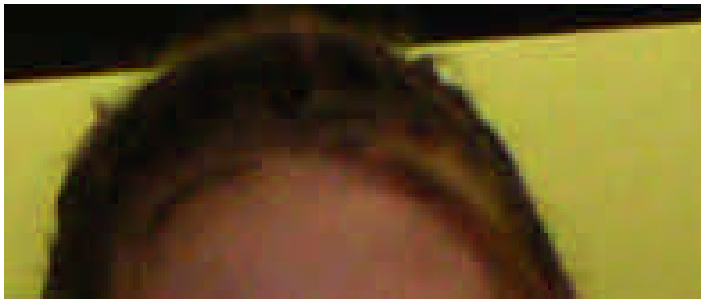
Acceptable

No Hat VS. Hat

Unacceptable

This is acceptable because this person is not wearing a hat in school.

This is not acceptable because this person is wearing a hat in school. Hats are not appropriate for a business casual in school.



Acceptable

No camo VS. camo

Unacceptable

This skirt is acceptable because it is of appropriate length. It looks business casual. It is not Camouflage

This is unacceptable because of the camouflage. But if the pants were alone they would be fine. All Camouflage clothing is not allowed.



Acceptable

Natural Hair Colors VS. Colored Hair

Unacceptable

This is acceptable because it is a natural color and the hair is well groomed. Highlights must look natural.



This is unacceptable because it is a non-natural color. Colors must look natural. Hair looks messy, and unprofessional. And would be distracting.

